



Panda Dome Passwords is evolving

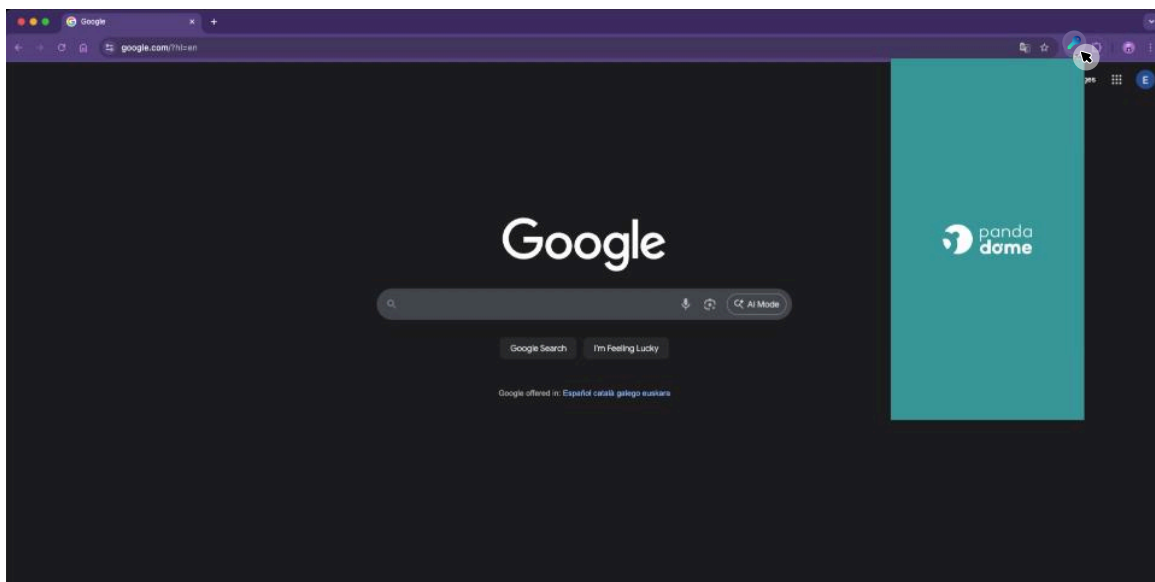
New technology, stronger security, and improved features

We're moving to Panda Dome Password Manager, your new and upgraded password manager.

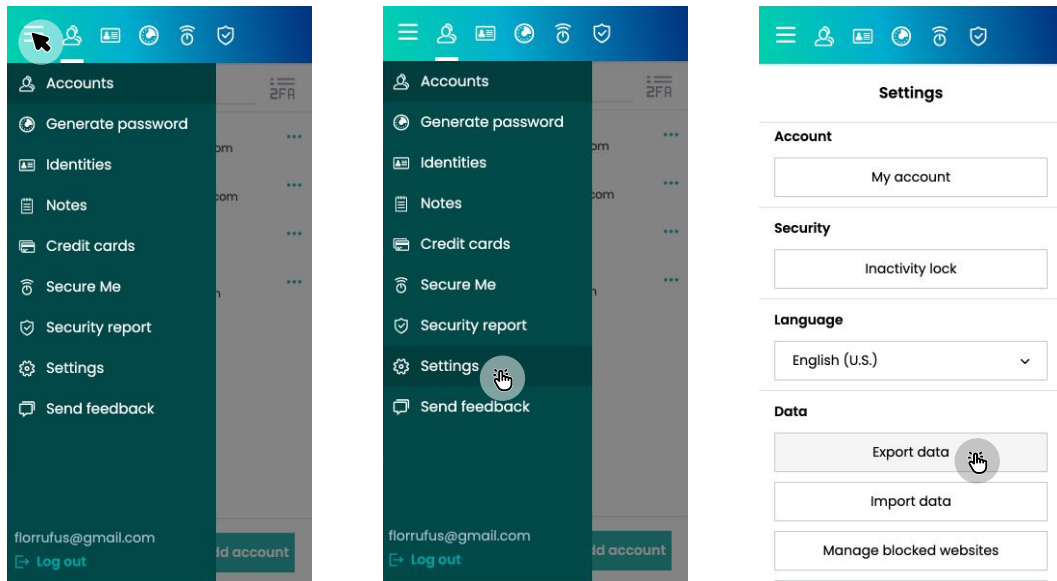
Transfer your passwords to the new Password Manager from your computer

1 Export your passwords

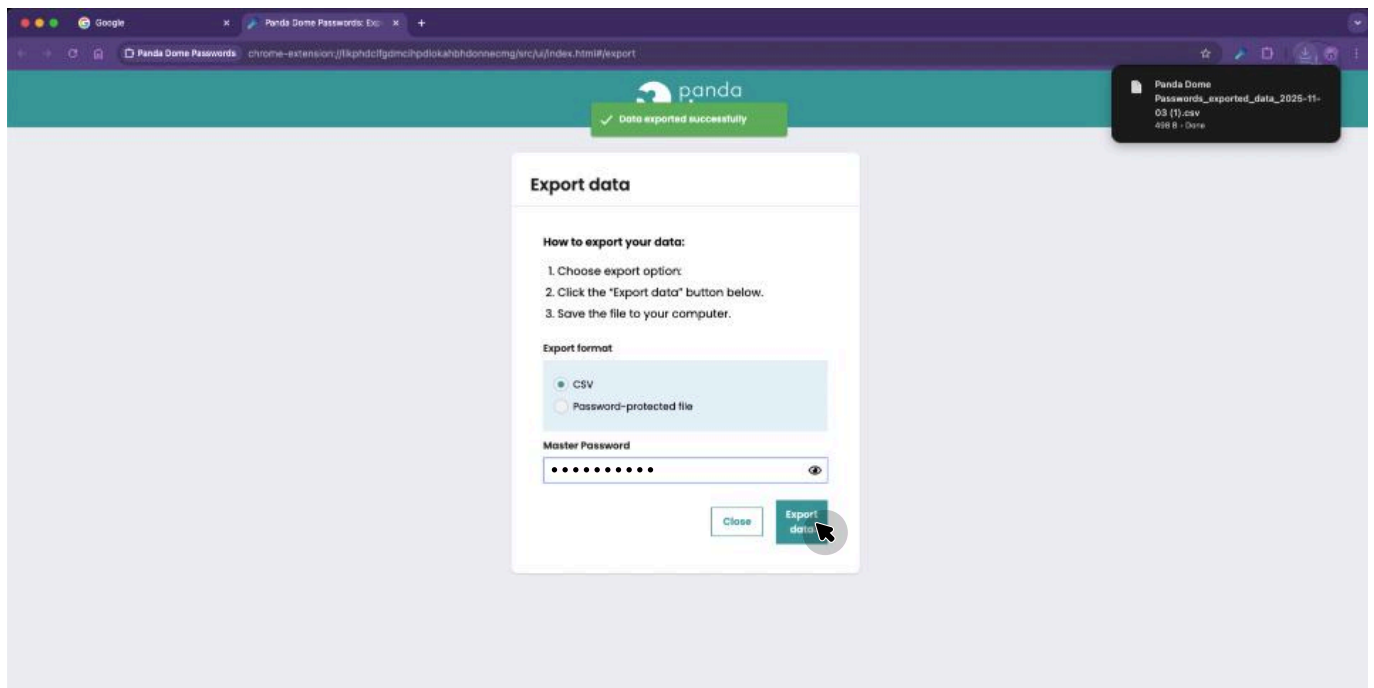
First, open the app or browser extension of the old Panda Dome Passwords.



Go to Menu → Settings → Export Data.



Enter your master password and click Export Data.



A CSV file containing all your passwords will be downloaded.
You don't need to open it—just keep it saved for the next step.

2 Create your master password

Now it's time to create your account in the new Panda Dome Password Manager.

If you're a Panda Dome Passwords customer, you can do this in two ways:

- 1 By clicking the link on this page, which will take you directly to the Password Manager account creation screen.

What do you need to do to transfer your passwords?

Export your passwords from Panda Dome Passwords, create your new master password, and import your keys into the new Panda Dome Password Manager.

1

Export your passwords

- Open the **Panda Dome Passwords App or Browser Extension** (old manager).
- Go to "Menu" > "Settings" > **"Export Data" (CSV format)**.
- Enter your master password and click on **"Export Data"**.
- A **.csv file** will **download** containing all your passwords (no need to open this file).

2

Create your new master password

- Go to the new **Panda Dome Password Manager** web console (new manager).
- Create your **new master password**.
- Click **"Create Account"**. Remember: you should use the same email as your Panda account.

3

Import your passwords

- Once inside your new manager, click **"Import"** at the bottom of the left menu.
- Click **"Import File"**. Make sure to use the template from the old manager **Panda Dome Passwords (old)**.
- Select the **.csv file you downloaded in step 1**. Click **"open"**.
- Press the **"Next"** button and finally click the **"Import"** button.
- Remember to **delete the .csv file** from your device when you're done.

And that's it! You can now start enjoying your new password manager.

- 2 Or by clicking the link included in the email you've received from "Panda Security - Password Manager", where you'll also find full instructions and access to the same account creation page.

Transfer your passwords

We'd like to inform you that we have upgraded the technology of our **password manager** to provide you with a more **secure, modern, and reliable** experience.

For **security and confidentiality** reasons, you must **transfer the passwords** stored in the current manager to the **new manager** before **January 31, 2026**.

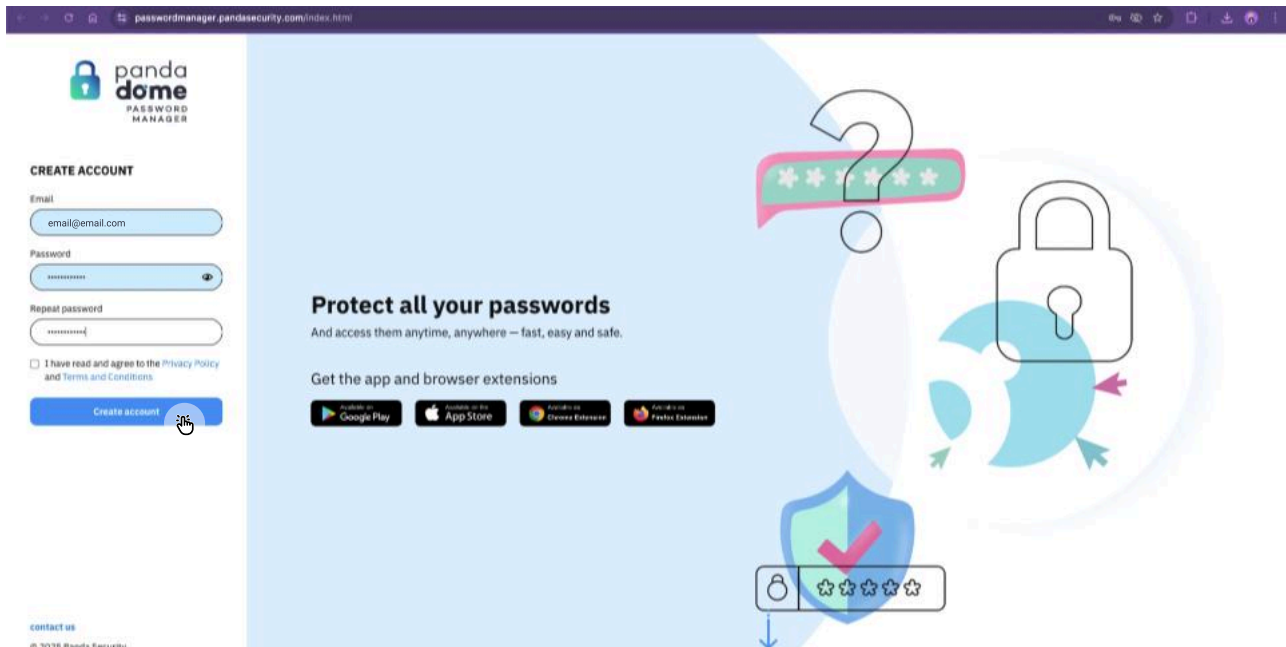
To make the process easier, we have prepared a detailed guide with all the steps you must take.

1	2	3
Export your passwords From your current Panda Dome Passwords manager, export your passwords in a CSV file.	Create your master password Access the new Panda Dome Password Manager and create your master password here .	Import your passwords Import the exported file into the new manager to have everything ready.

Both options take you to the correct place to set up your new Password Manager account.

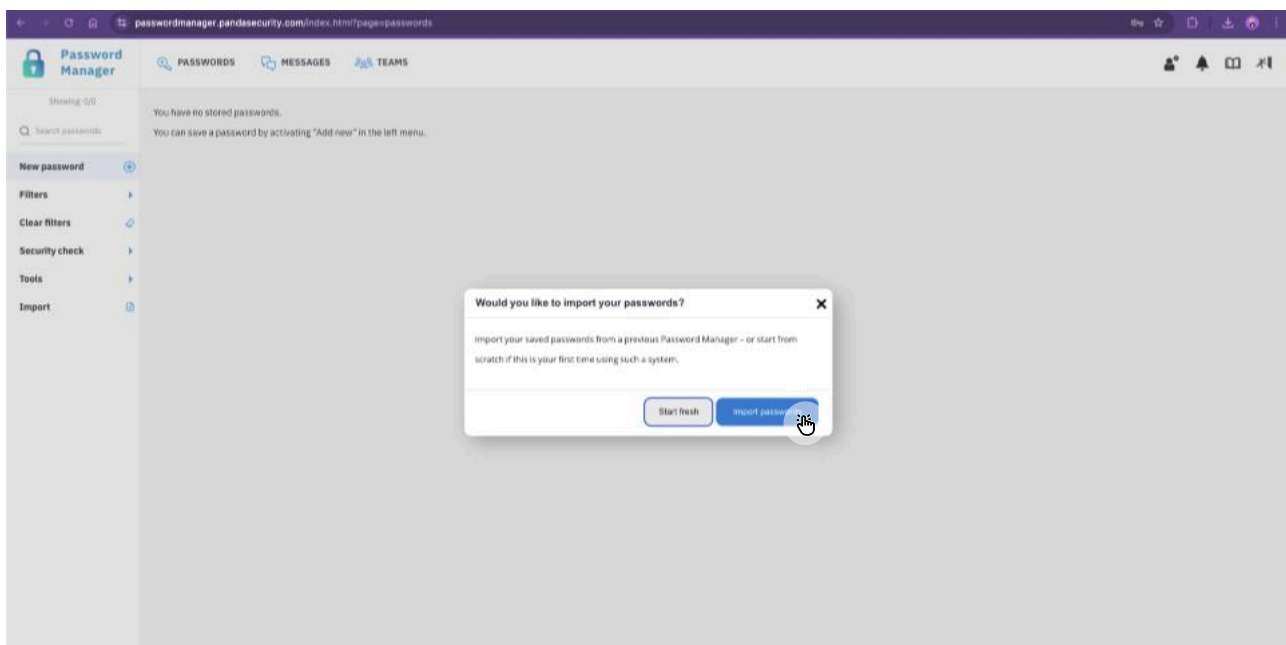
Create your new master password and make sure to use the same email address as your Panda account.

Click Create account... and you're ready to continue.

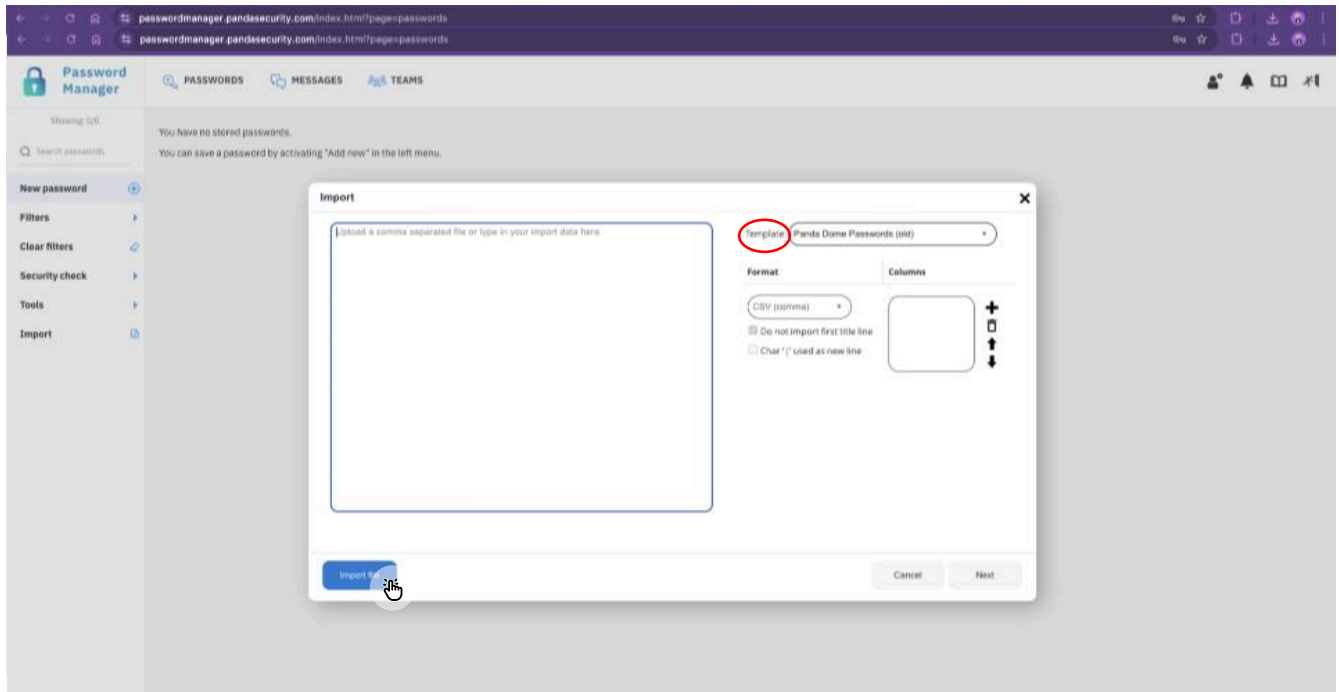


3 Import your passwords

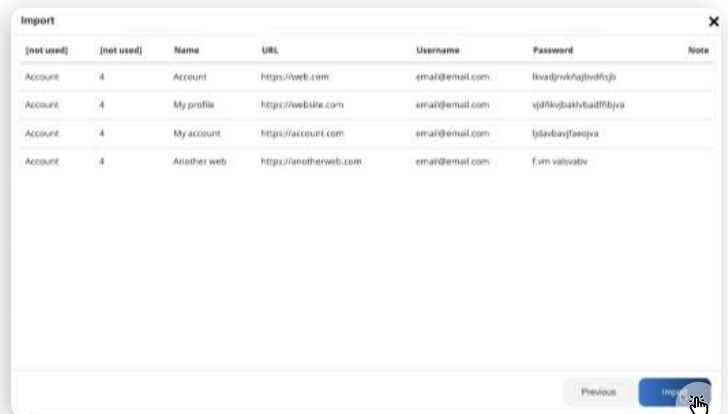
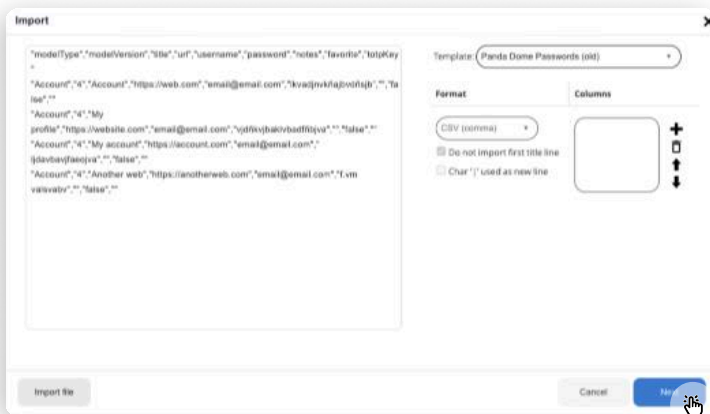
Once inside the new manager, you'll be asked if you want to import your passwords. Simply click Import passwords to begin.



It is important to leave the template check box "Panda Dome Passwords (old)" selected. Then, click Import file and proceed to upload the CSV file you exported earlier.

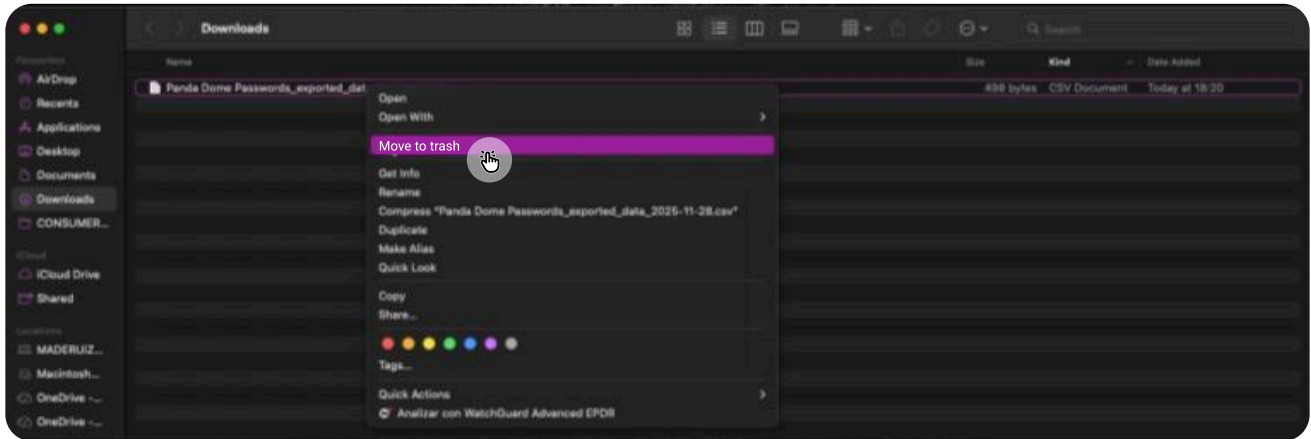


Click Next, then Import, and within seconds all your passwords will be successfully migrated to the new manager.



Very important:

When you're done, delete the CSV file from your device to keep your data secure.



And that's it

Switching to the new Panda Dome Password Manager is quick and easy with better protection, more convenience, and all your passwords safely stored.

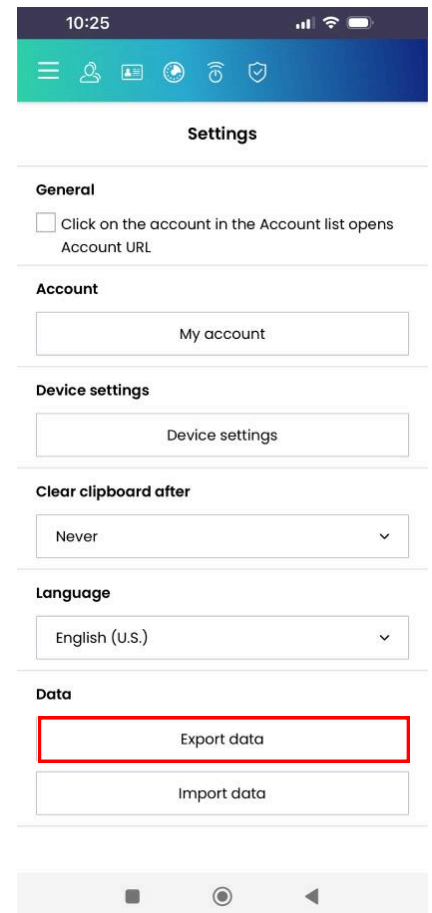
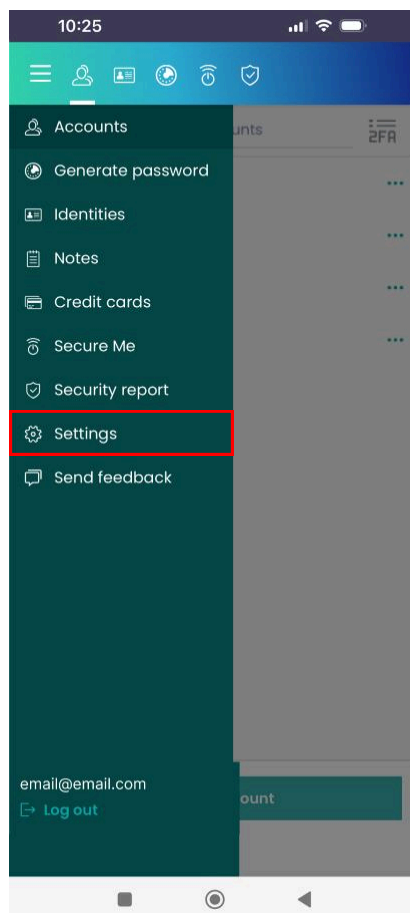
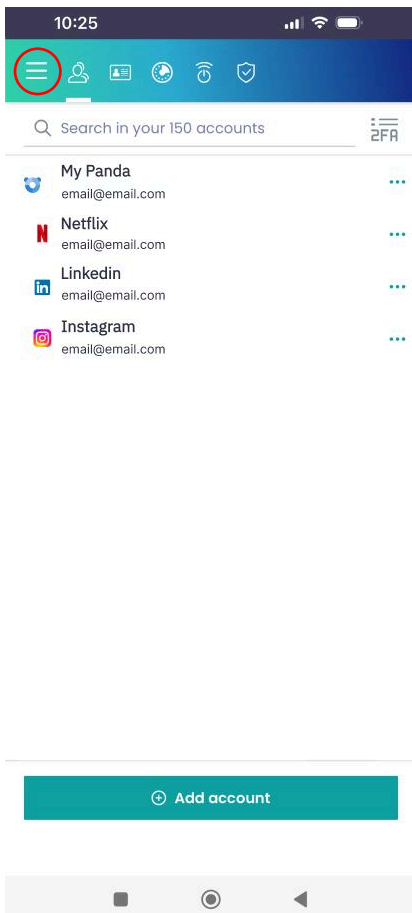


Transfer your passwords to the new Password Manager from your mobile phone

1 Export your passwords

First, open the app of the old Panda Dome Passwords.

Go to Menu → Settings → Export Data.









Enter your master password and click Export Data.

A CSV file containing all your passwords will be downloaded.

You don't need to open it—just keep it saved for the next step.

10:25



Export data

How to export your data:


1. Choose export option:
2. Click the "Export data" button below.
3. Save the file to your computer.

Export format

☒ CSV

☐ Password-protected file


Master Password

..... 

Close

Export data

10:25

 Data exported successfully

Export data

How to export your data:

1. Choose export option:
2. Click the "Export data" button below.
3. Save the file to your computer.

Export format

☒ CSV

☐ Password-protected file

Master Password

Close

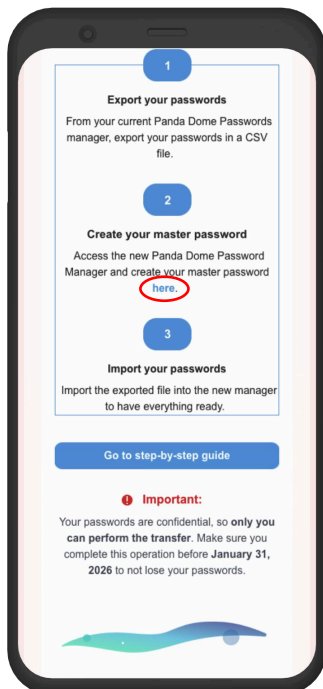
Export data

2 Create your master password

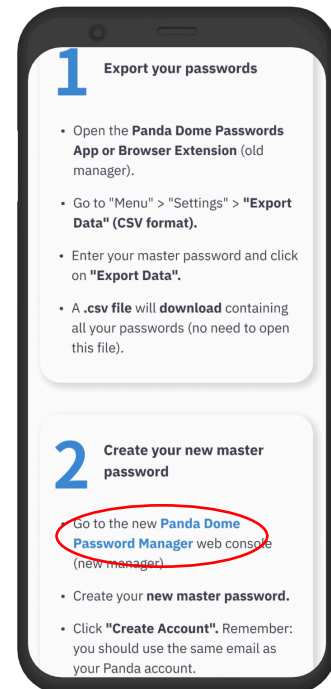
Now it's time to create your account in the new Panda Dome Password Manager.

If you're a Panda Dome Passwords customer, you can do this in two ways:

- 1 By clicking the link on this page, which will take you directly to the Password Manager account creation screen.



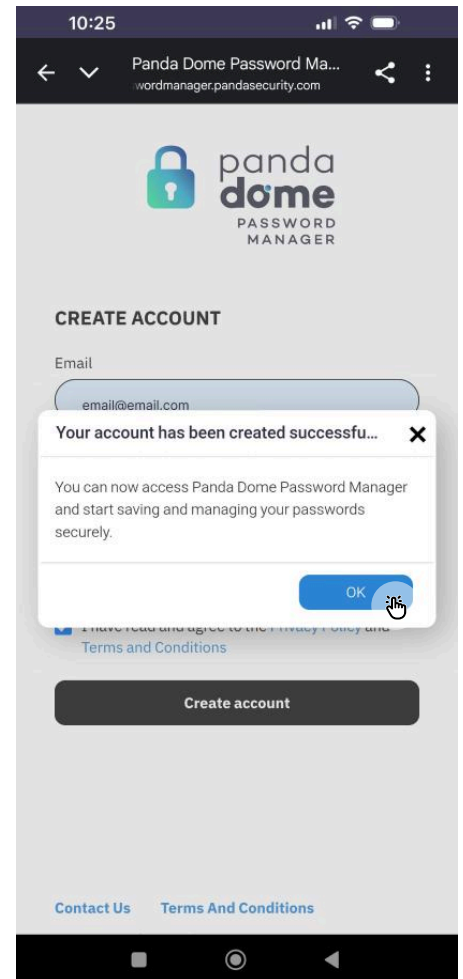
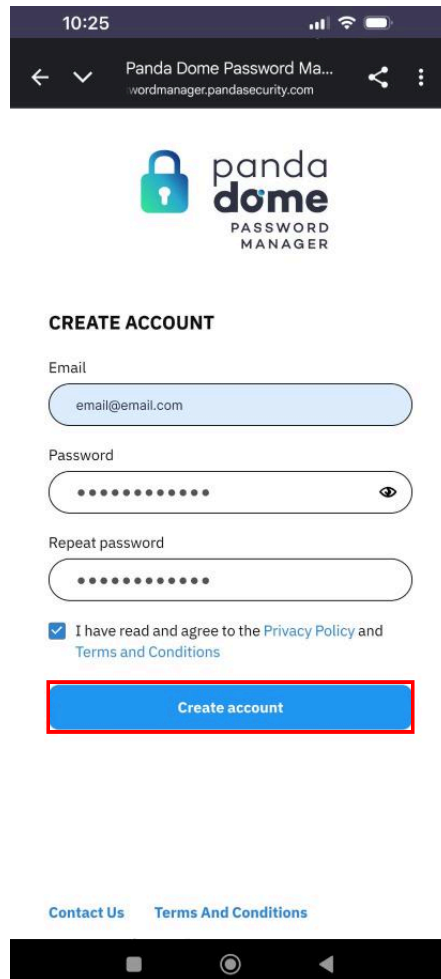
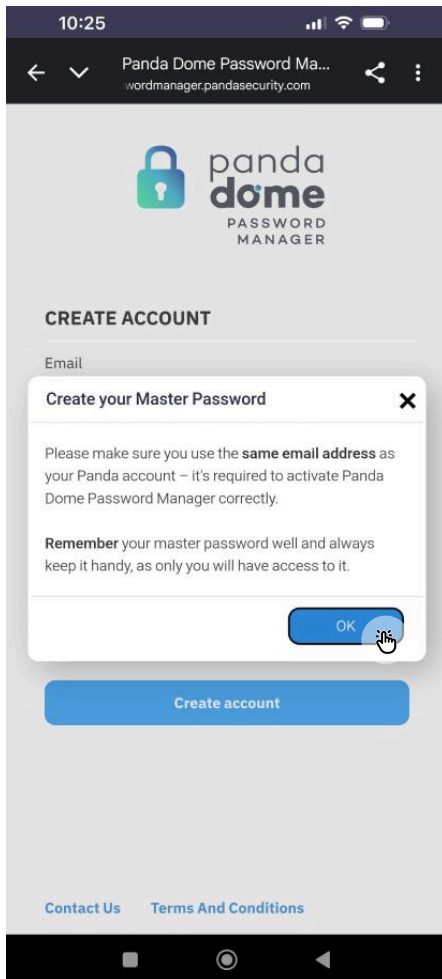
- 2 Or by clicking the link included in the email you've received from "Panda Security - Password Manager", where you'll also find full instructions and access to the same account creation page.



Both options take you to the correct place to set up your new Password Manager account.

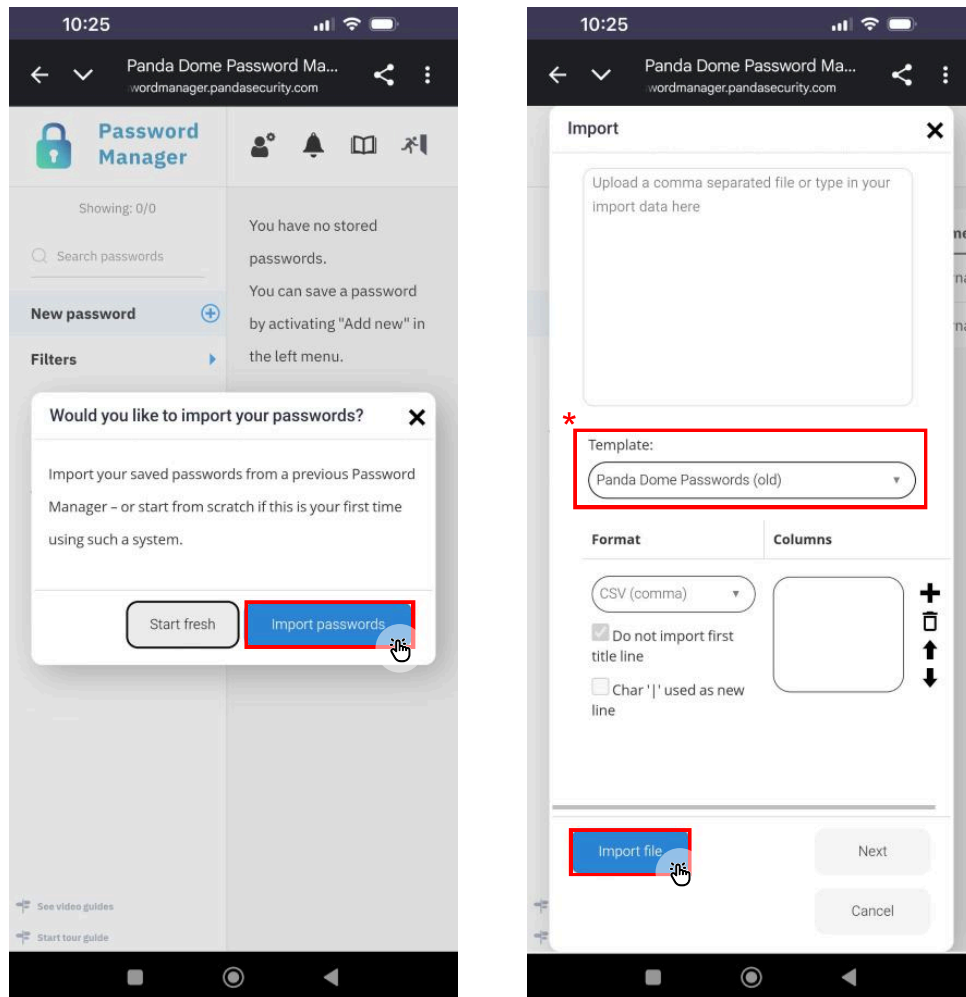
Create your new master password and make sure to use the same email address as your Panda account.

Click Create account... and you're ready to continue.



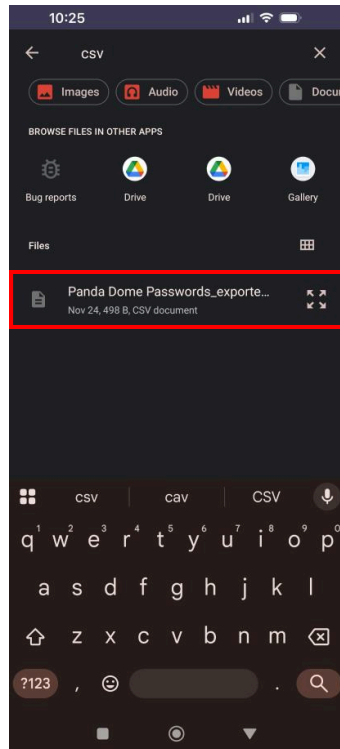
3 Import your passwords

Once inside the new manager, you'll be asked if you want to import your passwords. Simply click Import passwords to begin.

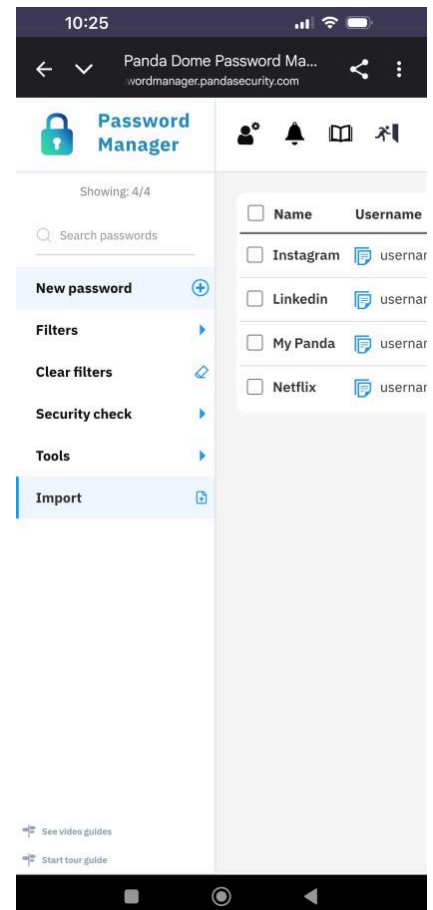
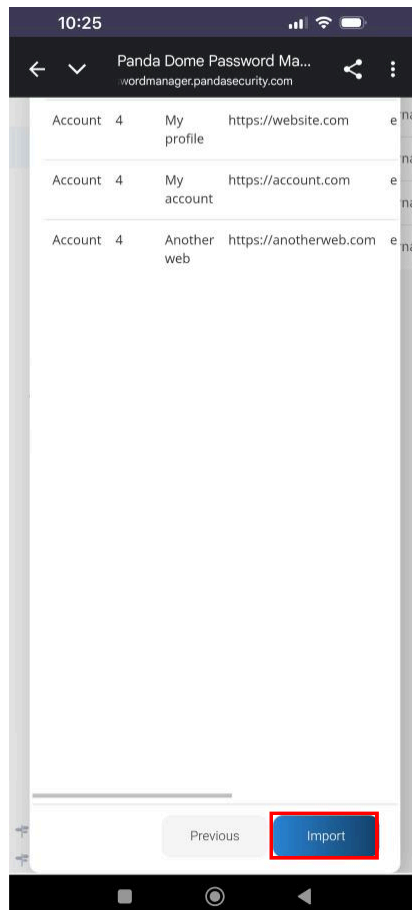
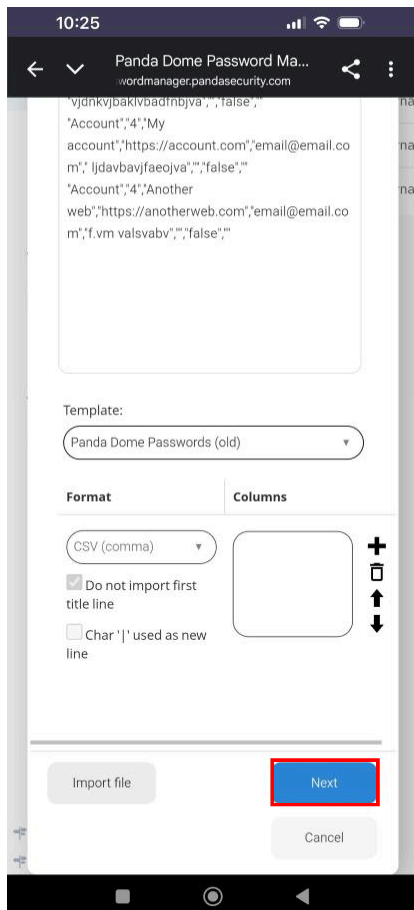


*It is important to leave the template check box "Panda Dome Passwords (old)" selected. Then, click Import file and proceed to upload the CSV file you exported earlier.

Locate the .CSV file on your phone and select it.

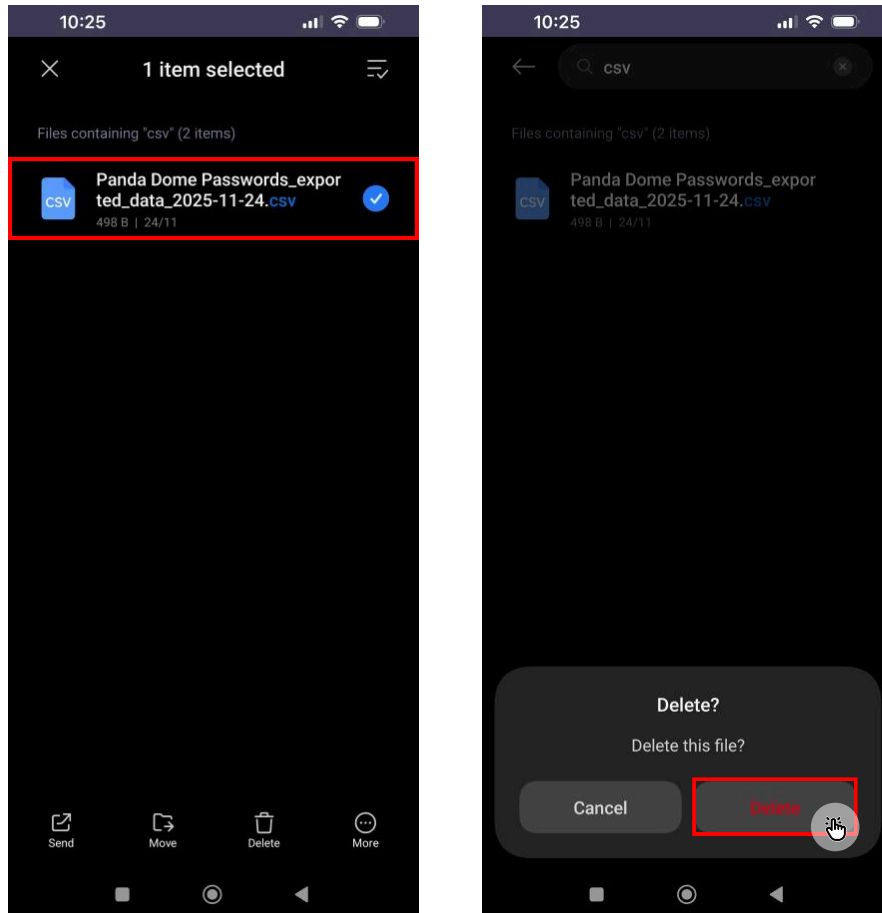


Click Next, then Import, and within seconds all your passwords will be successfully migrated to the new manager.



Very important:

When you're done, delete the CSV file from your device to keep your data secure.



And that's it

Switching to the new Panda Dome Password Manager is quick and easy with better protection, more convenience, and all your passwords safely stored.